



Newsletter for GT Radial TBR Customers - January 2013

Measuring Radial Run Out for Tire & Wheel Assembly

Does your team know how to use the least total weight to bring about a balanced tire-wheel assembly?

Do they know the different procedures for measuring radial run-out in steel and aluminum wheels?

[The GT Radial Vibration Technical Bulletin](#)



John Estes, Manager of the

GT Radial Casings Among the Best, says Southern Tire Mart

John Estes, plant manager of Southern Tire Mart in Lubbock, TX, has seen his share of casings over the past 20 years -- and he considers GT Radial to be among the best in

explains it all.

It's the Law in California!

As of Jan. 1, 2013, truck tractors operating in California using two or more open-shoulder drive tires were required to use tires verified as low rolling-resistance under the U.S. Environmental Protection Agency's (EPA) SmartWay Transport Partnership.

Fortunately, there is a SmartWay-verified GT Radial tire for every long haul axle position – the GSL213 FS for the steer, GT669+ FS for the drive, and the GT979 FS for the trailer axles.

Southern Tire Mart plant in Lubbock

demonstrated to be very durable, dependable and retreadable. Their level of rejection and scrap is much lower than average and the level of completion is way above the leading brands," he says. "We definitely find the GT Radial casings among some of the best in the market today."

Southern Tire Mart, LLC (STM), the largest independently owned commercial tire dealer and retread manufacturer in the U.S., operates 16 Bandag facilities and 54 commercial service locations in eight states throughout the South Central United States.

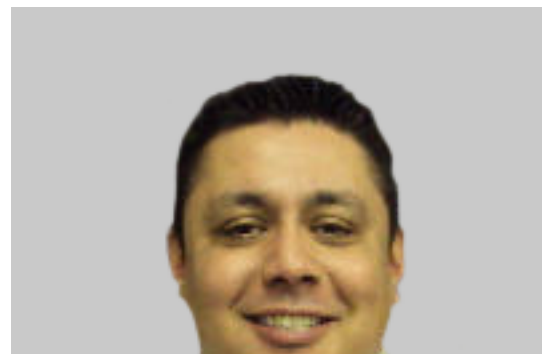
Southern Tire Mart's location in Lubbock has been a loyal distributor of GT Radial truck tires for more than five years and processes well over 1,000 GT Radial casings annually in their retread plant.

the market today.

"For years, GT Radial truck tire casings have

Tire Veteran Joins GITI Tire Sales Team

Maurice Rosales has joined GITI Tire USA as a Regional Sales Manager for the Western Region,



[Click here to read full story.](#)



Did You Know . . .

A total of 143,000 tires are produced daily at the seven Giti Tire plants.

handling GT Radial consumer and commercial tires.



A native of Southern California and current resident of Denver,

Rosales formerly served as a regional sales manager for Toyo Tire USA Corp., a position he held for 12 years.

He holds a BA degree in psychology with a minor in business marketing from California State University, Long Beach.

"Maurice has a great reputation in the tire industry and will be a strong asset to our customers," said John Thomas, Sales Director for the Western Region.

Laugh or Cry!

This dealer needs to charge double time, at the very least, for handling this service call!





GITI Tire USA
10404 Sixth St.
Rancho Cucamonga, CA 91730-5831

[Subscribe](#) to our email list